

# **Fregate Island**

*Dive Sites...*



## *Anse Victorin Buoy*

|                            |                 |
|----------------------------|-----------------|
| <b>Availability:</b>       | All year round  |
| <b>Range:</b>              | Short           |
| <b>Suitability:</b>        | All Divers      |
| <b>Depths:</b>             | 7m to 12m       |
| <b>Bottom Composition:</b> | Hard Coral Reef |



## *Aeberhard's Plateau*

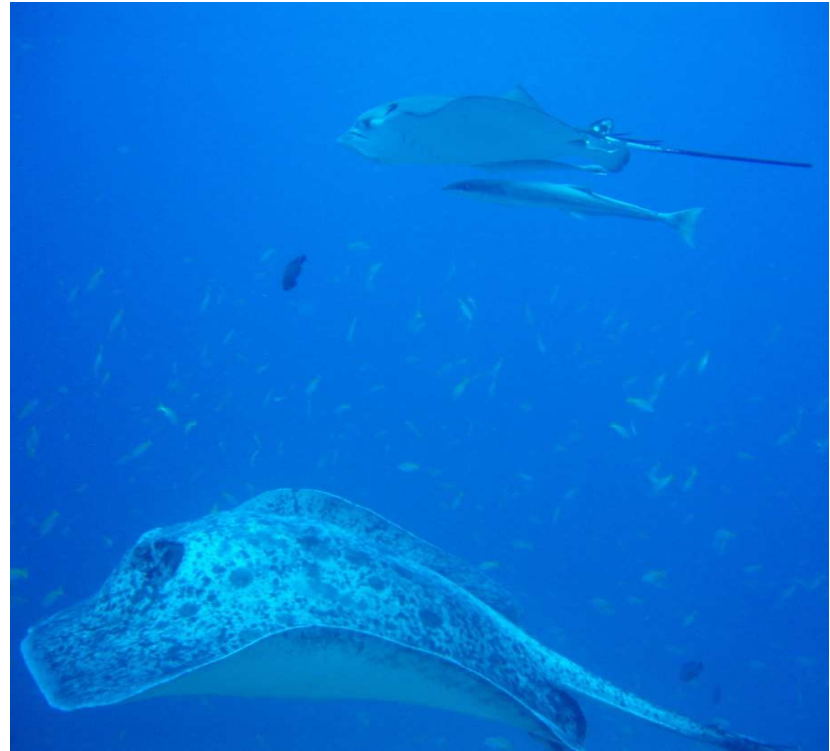
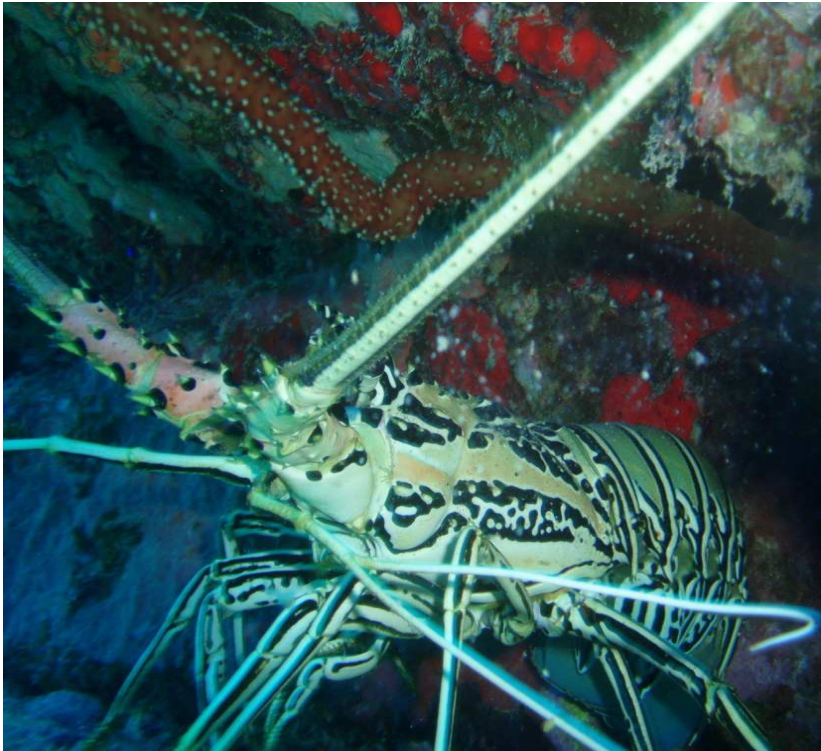
|                            |  |
|----------------------------|--|
| <b>Availability:</b>       | November to July                               |
| <b>Range:</b>              | Mid  |
| <b>Suitability:</b>        | Experience Divers + AOWD                       |
| <b>Depths:</b>             | 23m to 34m                                     |
| <b>Bottom Composition:</b> | Submarine Granite Rocks and Hard Coral Plateau |





## *Airport Reef*

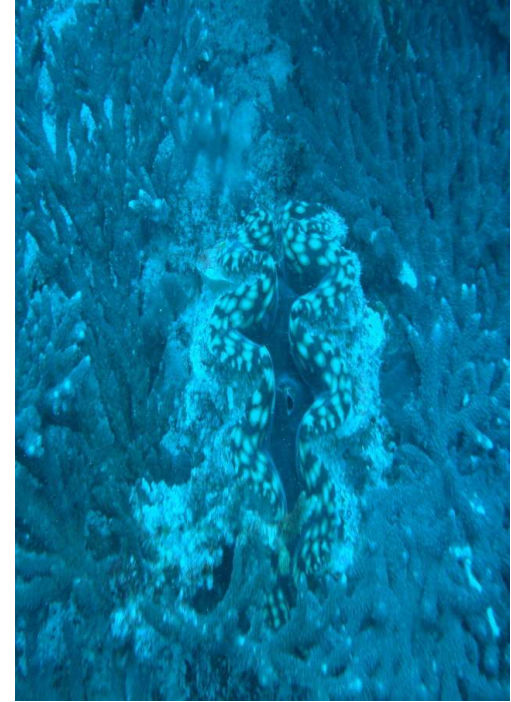
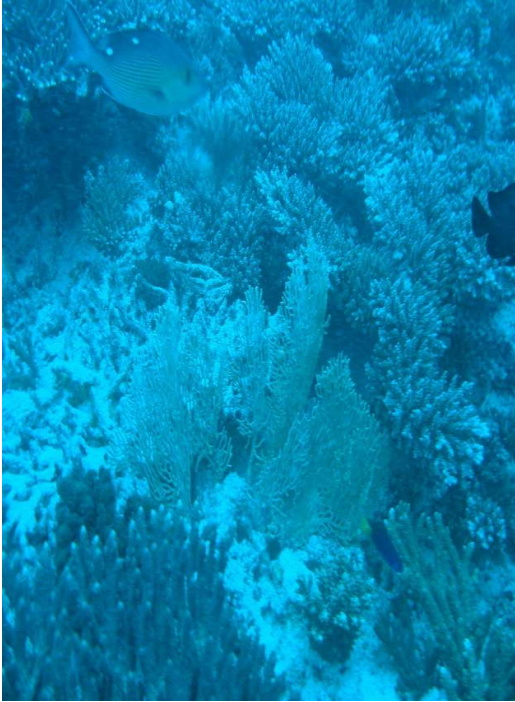
|                            |                    |
|----------------------------|--------------------|
| <b>Availability:</b>       | All year round     |
| <b>Range:</b>              | Short              |
| <b>Suitability:</b>        | All Divers         |
| <b>Depths:</b>             | 6m to 18m          |
| <b>Bottom Composition:</b> | Hard Coral Plateau |



## *Barracuda Rock*

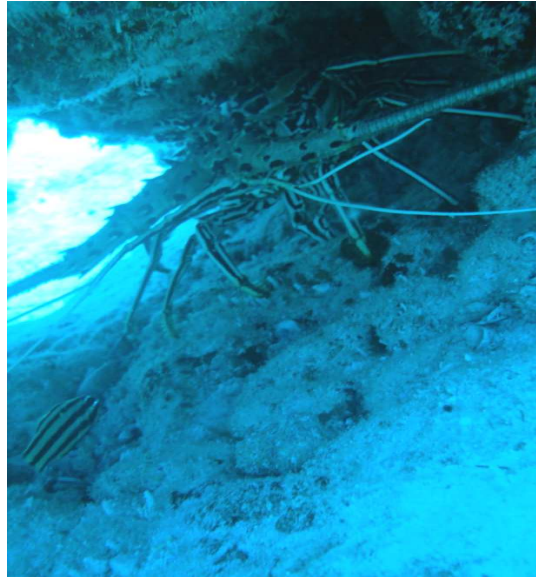
|                            |  |
|----------------------------|--|
| <b>Availability:</b>       | November to July                               |
| <b>Range:</b>              | Long   |
| <b>Suitability:</b>        | Experience Divers + AOWD                       |
| <b>Depths:</b>             | 5m to 20m                                      |
| <b>Bottom Composition:</b> | Submarine Granite Rocks and Hard Coral Plateau |





## *Grande Anse Reef*

|                            |                 |
|----------------------------|-----------------|
| <b>Availability:</b>       | All year round  |
| <b>Range:</b>              | Short           |
| <b>Suitability:</b>        | All Divers      |
| <b>Depths:</b>             | 5m to 16m       |
| <b>Bottom Composition:</b> | Hard Coral Reef |



## *Lion's Rock*

|                            |  |
|----------------------------|--|
| <b>Availability:</b>       | November to July                               |
| <b>Range:</b>              | Mid  |
| <b>Suitability:</b>        | Experience Divers + AOWD                       |
| <b>Depths:</b>             | 5m to 24m                                      |
| <b>Bottom Composition:</b> | Submarine Granite Rocks and Hard Coral Plateau |





## *L' Ilot Frégate*

|                            |  |
|----------------------------|--|
| <b>Availability:</b>       | November to July                               |
| <b>Range:</b>              | Long   |
| <b>Suitability:</b>        | All Divers                                     |
| <b>Depths:</b>             | 5m to 15m                                      |
| <b>Bottom Composition:</b> | Submarine Granite Rocks and Hard Coral Plateau |





## *Monument Valley*

|                            |                          |
|----------------------------|--------------------------|
| <b>Availability:</b>       | November to July         |
| <b>Range:</b>              | Long                     |
| <b>Suitability:</b>        | Experience Divers + AOWD |
| <b>Depths:</b>             | 12m to 32m               |
| <b>Bottom Composition:</b> | Submarine Granite Rocks  |



## *Solidad*

|                            |  |
|----------------------------|--|
| <b>Availability:</b>       | November to July                               |
| <b>Range:</b>              | Short  |
| <b>Suitability:</b>        | All Divers                                     |
| <b>Depths:</b>             | 7m to 16m                                      |
| <b>Bottom Composition:</b> | Submarine Granite Rocks and Hard Coral Plateau |